

Autodesk Design Academy 2008

# Installation Guide

The Autodesk logo is displayed vertically in white text on a black background. The word "Autodesk" is written in a bold, sans-serif font, with a registered trademark symbol (®) at the top right of the letter 'k'.

## Copyright© 2007 Autodesk, Inc.

All Rights Reserved

This publication, or parts thereof, may not be reproduced in any form, by any method, for any purpose.

AUTODESK, INC., MAKES NO WARRANTY, EITHER EXPRESS OR IMPLIED, INCLUDING BUT NOT LIMITED TO ANY IMPLIED WARRANTIES OF MERCHANTABILITY OR FITNESS FOR A PARTICULAR PURPOSE REGARDING THESE MATERIALS, AND MAKES SUCH MATERIALS AVAILABLE SOLELY ON AN "AS-IS" BASIS.

IN NO EVENT SHALL AUTODESK, INC., BE LIABLE TO ANYONE FOR SPECIAL, COLLATERAL, INCIDENTAL, OR CONSEQUENTIAL DAMAGES IN CONNECTION WITH OR ARISING OUT OF ACQUISITION OR USE OF THESE MATERIALS. THE SOLE AND EXCLUSIVE LIABILITY TO AUTODESK, INC., REGARDLESS OF THE FORM OF ACTION, SHALL NOT EXCEED THE PURCHASE PRICE, IF ANY, OF THE MATERIALS DESCRIBED HEREIN.

Autodesk, Inc., reserves the right to revise and improve its products as it sees fit. This publication describes the state of the product at the time of publication, and may not reflect the product at all times in the future.

### Autodesk Trademarks

The following are registered trademarks or trademarks of Autodesk, Inc., in the USA and other countries: 3DEC (design/logo), 3December, 3December.com, 3ds Max, ActiveShapes, Actrix, ADI, Alias, Alias (swirl design/logo), AliasStudio, AliasWavefront (design/logo), ATC, AUGI, AutoCAD, AutoCAD Learning Assistance, AutoCAD LT, AutoCAD Simulator, AutoCAD SQL Extension, AutoCAD SQL Interface, Autodesk, Autodesk Envision, Autodesk Insight, Autodesk Intent, Autodesk Inventor, Autodesk Map, Autodesk MapGuide, Autodesk Streamline, AutoLISP, AutoSnap, AutoSketch, AutoTrack, Backdraft, Built with ObjectARX (logo), Burn, Buzzsaw, CAiCE, Can You Imagine, Character Studio, Cinestream, Civil 3D, Cleaner, Cleaner Central, ClearScale, Colour Warper, Combustion, Communication Specification, Constructware, Content Explorer, Create>what's>Next> (design/logo), Dancing Baby (image), DesignCenter, Design Doctor, Designer's Toolkit, DesignKids, DesignProf, DesignServer, DesignStudio, DesignStudio (design/logo), Design Your World, Design Your World (design/logo), DWF, DWG, DWG (logo), DWG TrueConvert, DWG TrueView, DXF, EditDV, Education by Design, Extending the Design Team, FBX, Filmbox, FMDesktop, Freewheel, GDX Driver, Gmax, Heads-up Design, Heidi, HOOPS, HumanIK, i-drop, iMOUT, Incinerator, IntroDV, Kaydara, Kaydara (design/logo), LocationLogic, Lustre, Maya, Mechanical Desktop, MotionBuilder, ObjectARX, ObjectDBX, Open Reality, PolarSnap, PortfolioWall, Powered with Autodesk Technology, Productstream, ProjectPoint, Reactor, RealDWG, Real-time Roto, Render Queue, Revit, Showcase, SketchBook, StudioTools, Topobase, Toxik, Visual, Visual Bridge, Visual Construction, Visual Drainage, Visual Hydro, Visual Landscape, Visual Roads, Visual Survey, Visual Syllabus, Visual Toolbox, Visual Tugboat, Visual LISP, Voice Reality, Volo, and Wiretap.

### Autodesk Canada Co. Trademarks

The following are registered trademarks or trademarks of Autodesk Canada Co. in the USA and/or Canada and other countries: Backburner, Discreet, Fire, Flame, Flint, Frost, Inferno, Multi-Master Editing, River, Smoke, Sparks, Stone, Wire.

### Third Party Trademarks

All other brand names, product names or trademarks belong to their respective holders.

### Third Party Software Credits and Attributions

Third Party Software Credits and Attributions for the software products contained in this publication can be found in the "About..." information display in the applicable software products and in any accompanying documentation.

### GOVERNMENT USE

Use, duplication, or disclosure by the U.S. Government is subject to the same restrictions described elsewhere herein.

Published by: Autodesk, Inc.  
111 McInnis Parkway  
San Rafael, CA 94903, USA

# Contents

<b>Chapter 1</b>	<b>Getting Started . . . . .</b>	<b>1</b>
	Autodesk Design Academy 2008 . . . . .	1
	Design Academy Products . . . . .	1
	Documentation for Autodesk Products in Design Academy . . . . .	2
<b>Chapter 2</b>	<b>Prepare for Installation . . . . .</b>	<b>5</b>
	Overview of Installation . . . . .	6
	Site Configuration . . . . .	6
	Installation Prerequisites . . . . .	6
	Understand and Verify Your Product Licensing . . . . .	7
	Review the System Requirements . . . . .	10
	Understand Administrative Permissions . . . . .	10
	Unsuccessful Installations . . . . .	10
	Deployment Plan . . . . .	11
	Clean a Primary System and Restore the Operating System . . . . .	11
	Consistent Personalization Data . . . . .	12
	Create Shared Folders for Deployments . . . . .	12
	Installation Support and Types . . . . .	13
	Installation Support by Product . . . . .	13
	Installation Types . . . . .	15
<b>Chapter 3</b>	<b>Installation Quickstarts Overview . . . . .</b>	<b>17</b>
	Summary of Quickstarts . . . . .	18

	Network Licensing Quickstart . . . . .	18
	Create Deployments Quickstart . . . . .	18
	Stand-Alone Quickstart . . . . .	19
<b>Chapter 4</b>	<b>Network Licensing Quickstart . . . . .</b>	<b>21</b>
	Install the Network License Manager . . . . .	23
	Install the Network License Activation Utility . . . . .	25
	Run the Network License Activation Utility (online request) . . . . .	27
	Run the Network License Activation Utility (offline request) . . . . .	30
	Configure a License Manager . . . . .	33
	Licensing Multiple Products . . . . .	35
<b>Chapter 5</b>	<b>Create Deployments Quickstart . . . . .</b>	<b>39</b>
	Use the Installation Wizard to Set Up a Deployment . . . . .	40
	Creating a Deployment . . . . .	40
	Final Review and Complete Setup . . . . .	48
<b>Chapter 6</b>	<b>Stand-Alone Quickstart . . . . .</b>	<b>51</b>
	Stand-Alone Products . . . . .	52
<b>Chapter 7</b>	<b>Product Distribution . . . . .</b>	<b>57</b>
	Installation by Deployments . . . . .	58
	Distribution by Imaging Software . . . . .	58
<b>Chapter 8</b>	<b>Product Activation and Removal . . . . .</b>	<b>63</b>
	Overview of Activation . . . . .	64
	Product Activation . . . . .	64
	Product Removal . . . . .	65
<b>Chapter 9</b>	<b>Education Curriculum . . . . .</b>	<b>67</b>
	Curricula Overview and Installation . . . . .	68
<b>Chapter 10</b>	<b>Troubleshooting Guide . . . . .</b>	<b>73</b>
	Network Licensing Issues . . . . .	74
	Deployment Issues . . . . .	74
	Activation Issues . . . . .	74
	Refresh Issues . . . . .	75
<b>Chapter 11</b>	<b>Contacts and Contents . . . . .</b>	<b>77</b>
	Contact Information . . . . .	78
	Product Contents . . . . .	80

# Getting Started

## **Autodesk Design Academy 2008**

Autodesk® Design Academy offers a comprehensive pre-engineering, pre-architecture, and cross-discipline curriculum that helps students learn the fundamentals of the design process while using popular Autodesk design tools. The curriculum meets national standards and includes a course syllabus, student exercises and projects, online learning resources, and cross-curricular projects for physics, science, and chemistry. The curriculum engages educators and students in real-life projects, while developing skills in teamwork, design, mathematics, science, and technology.

In addition to purchasing the Autodesk Design Academy package, you may purchase Autodesk Media and Entertainment “Autodesk Animation Academy” products, which are licensed separately from the Autodesk Design Academy products and are sold either through Autodesk Media and Entertainment Academic Value Added Resellers or directly from Autodesk.

## **Design Academy Products**

Autodesk Design Academy contains an extensive collection of products available to educational sites. Each set of product media (CDs or DVDs) in the package represents an individual Autodesk product. The collection includes the following products.



Product	Notes
AutoCAD® 2008	
Autodesk® VIZ 2008	
AutoCAD Architecture 2008	
Revit® Architecture 2008	
AutoCAD MEP 2008	
Autodesk Inventor® Professional 2008	Contains AutoCAD Mechanical 2008, Autodesk Inventor 2008, Autodesk Vault 2008, and Autodesk Design Review 2008
AutoCAD Civil 3D® 2008	Includes a companion seat of AutoCAD Land Desktop Companion 2008

---

**TIP** To reduce installation time, only install what is necessary.

---

**IMPORTANT** Many of the product media contained in this package contain 32-bit and 64-bit versions of the programs. You should only install 32-bit versions. 64-bit versions are not supported for Autodesk Design Academy 2008.

---

### **Documentation for Autodesk Products in Design Academy**

If necessary, you can print PDF versions of the installation and licensing manuals from the product's installation screen or from the product media. You need Adobe Acrobat Reader to view the PDF files. To download the Adobe Acrobat Reader free of charge, visit [www.adobe.com](http://www.adobe.com).

In addition to the installation and licensing guides, you can access extensive documentation within each Autodesk product by clicking the Help menu in the product.

For late-breaking information about each product (including installation information), see the product's Readme file (on

the product media), or check the individual product sites at [www.autodesk.com/products](http://www.autodesk.com/products). The main Autodesk support page is [www.autodesk.com/support](http://www.autodesk.com/support).



# Prepare for Installation

# 2

This section provides background information regarding the installation of Autodesk Design Academy products, prerequisite conditions that need to be met before installation begins, the types of installations, and a general understanding of the installation workflow.

## In this chapter

- Overview of Installation
- Installation Prerequisites
- Installation Support and Types

## Overview of Installation

Most Autodesk products offer three installation options. These include stand-alone, multi-seat stand-alone, and network licensed installations.

Autodesk Design Academy 2008 contains seven individual Autodesk products. Each of those products has its own installer that offers at least one of the three types of installation options.

The installation you'll use depends on which products you want to install. The recommended installation method for classroom or lab environments is network licensed or multi-seat stand-alone. Both of these methods require that you use the Installation Wizard to create deployments. Deployments are stored in a shared folder and allow you to install the product on computers that have access to the shared folder. The Installation Wizard can be run directly from the product media.

---

**NOTE** While all products can be installed using the stand-alone method, the type of license you've purchased should dictate the installation method you use. Some products *only* allow you to use the stand-alone installation method. See Stand-Alone Quickstart (page 51) for a list of stand-alone products.

---

### Site Configuration

Each Design Academy site uses its own configuration of product deployments and installations. The installation process can be greatly simplified by only installing the products that are required for the classroom or lab to operate.

For example, one site might use the deployments to install network-licensed versions of AutoCAD Architecture 2008 and Autodesk VIZ 2008 on 20 computers. Another site might use the deployments to install multi-seat stand-alone versions of AutoCAD 2008, AutoCAD Architecture 2008, and AutoCAD Civil 3D 2008 on 40 computers.

## Installation Prerequisites

Before installing any of the products in the Design Academy package, it is recommended that you make sure the following conditions have been met:

- You understand the product licenses you've ordered. See Understand and Verify Your Product Licensing (page 7).

- For each product you plan to install, you have reviewed the system requirements. See [Review the System Requirements \(page 10\)](#).
- You have an understanding of administrative permissions. See [Understand Administrative Permissions \(page 10\)](#).
- You have closed all other programs and disabled anti-virus software. See [Unsuccessful Installations \(page 10\)](#).
- You have created a distribution plan for products once they're installed on your primary system. See [Deployment Plan \(page 11\)](#).
- If you are using imaging software, you have properly cleaned your primary system in preparation for creating a master image. See [Clean a Primary System and Restore the Operating System \(page 11\)](#).
- You know how you're going to personalize the products during activation. See [Consistent Personalization Data \(page 12\)](#).
- You have created shared folders for each product you plan to install using the deployments. See [Create Shared Folders for Deployments \(page 12\)](#).

### **Understand and Verify Your Product Licensing**

The type of licensing you purchased for your package of Autodesk Design Academy determines the installation and deployment options that you have available. There are three types of product licenses: network, multi-seat stand-alone, and stand-alone.

#### **Network License**

Purchasing network licensed products is recommended for large drafting/design facilities, classrooms, and lab environments. When you install network licensed products, you do not have to worry about activation. Systems running products that use a network license do not require activation because the Network License Manager manages all requests for running a networked application.

This means, for example, that you can purchase a network license for 25 seats. The product is installed on 30 systems in the classroom. Once the network license manager is installed, activated, configured and started on the server, students can log on to any of the 30 systems up to a maximum of 25 (the number of licenses). If someone exits the program on one of the 25 systems, the server frees a license for someone on one of the remaining five systems.

The administrative image created by the Installation Wizard when you create a deployment must be used to install networked applications on a workstation.

If you are installing network licensed products, the following table shows you which products use the network license manager and which chapters you should reference in order to install, deploy, and activate your facility.

<b>Products that use the Network License Manager</b>	<b>Refer to These Chapters</b>
■ AutoCAD 2008	Network Licensing Quickstart (page 21)
■ Autodesk VIZ 2008	Create Deployments Quickstart (page 39)
■ AutoCAD Architecture 2008	Product Distribution (page 57)
■ AutoCAD MEP 2008	Product Activation and Removal (page 63)
■ Autodesk Inventor Professional 2008	
■ AutoCAD Civil 3D 2008	
■ Revit Architecture 2008	Network Licensing Quickstart (page 21)
	Product Distribution (page 57)
	Product Activation and Removal (page 63)

### **Multi-Seat Stand-Alone License**

If your facility is not networked, but all the systems can connect to the Internet, you can opt for multi-seat stand-alone licensed products. The Installation Wizard is used to create deployment images. Contained within the deployment images are shortcuts that are double-clicked to install the products. This type of licensing means that your products each use the same single serial number for activation. But, unlike network licensed products, you can only install the products on the maximum number of systems that the license allows.

Furthermore, registration information is pre-configured during the creation of the deployment image which ensures duplicate registration data for all the workstations. As long as a product is installed using the deployment image shortcut and all the systems have Internet access, they are automatically activated the first time a product is launched.

For example, you purchased a multi-seat stand-alone license for 25 seats. You have 30 systems in your classroom that can communicate over the Internet but they are not networked. Even though you could install software on all 30 systems, only the first 25 systems you start will have their licenses activated. Because the licenses are tied to each specific system, the remaining five systems will never be able to run the software unless you purchase an additional five licenses.

The following table shows you multi-seat stand-alone licensed products and which chapters you should reference in order to install, deploy, and activate your facility.

<b>Products that use Multi-Seat Stand-Alone Licenses</b>	<b>Refer to These Chapters</b>
<ul style="list-style-type: none"> <li>■ AutoCAD 2008</li> <li>■ Autodesk VIZ 2008</li> <li>■ AutoCAD Architecture 2008</li> <li>■ AutoCAD MEP 2008</li> <li>■ Autodesk Inventor Professional 2008</li> <li>■ AutoCAD Civil 3D 2008 (includes Land Desktop Companion 2008)</li> </ul>	<ul style="list-style-type: none"> <li>Network Licensing Quickstart (page 21)</li> <li>Product Distribution (page 57)</li> <li>Product Activation and Removal (page 63)</li> </ul>
<ul style="list-style-type: none"> <li>■ Revit Architecture 2008</li> </ul>	<ul style="list-style-type: none"> <li>Network Licensing Quickstart (page 21)</li> <li>Product Distribution (page 57)</li> <li>Product Activation and Removal (page 63)</li> </ul>

You request a change to the licensing you've purchased by contacting your Academic Value Added Reseller. You can change from multi-seat stand-alone licensing to network licensing and you can also increase the number of seats for your existing license.

### **Stand-Alone License**

Stand-alone licensed products differ from multi-seat stand-alone licensed products in that they must be installed directly from the product media. Registration of stand-alone products occurs the first time the application is launched and registration information must be entered manually during the registration process. In a classroom or lab environment there are two ways to handle these products.

- Move from system to system, installing on each from the product media.
- If the systems are networked, copy the product media to a shared folder on the primary server and then run the *setup.exe* file in the shared folder on the server from each satellite system.

The following table shows the products in your package that are only available as stand-alone licensed products and which chapters you should reference in order to install your facility.

<b>Products that use Stand-Alone Licenses</b>	<b>Refer to These Chapters</b>
■ Autodesk Design Review 2008 (Included in the Autodesk Inventor Professional 2008)	Stand-Alone Quickstart (page 51) Product Distribution (page 57)

### **Review the System Requirements**

Make sure that the systems on which you plan to install any of the Design Academy products meet the system requirements for each product being installed. If your systems do not meet the system requirements, problems can occur.

Each product has its own set of system requirements. System requirements can be accessed directly from the Installation Wizard of each product you plan to install or from [www.autodesk.com](http://www.autodesk.com).

All products included in Autodesk Design Academy 2008 with the exception of Autodesk Inventor 2008 are compatible with Microsoft Windows Vista™.

### **Understand Administrative Permissions**

To install Design Academy products, you must have administrative privileges on each workstation where the products are to be installed. If you are unsure of your permission level, see your system administrator for more information.

### **Unsuccessful Installations**

The installation process of many of the Design Academy products may stop if some applications (such as Microsoft® Outlook® or virus-checking programs) are running. Close all running applications and temporarily disable virus checking utilities.

---

**TIP** If you encounter any MSI errors during installation, further information can be found in the Autodesk Support Knowledge base or the Microsoft Support Knowledge base.

---

## Deployment Plan

Before installing any products, you should have a good idea about how you're going to deploy products from your primary system to all the other systems in your facility.

You can use the Installation Wizard to create deployment images for each product and place those images in a shared folder you've created.

Another option for installing software on multiple systems is to use imaging software, such as Norton Ghost. Imaging software uses a master image of the primary system that you duplicate on all the workstations. If you are going to perform network or multi-seat stand-alone installations, you must set up a shared folder. The shared folder should be a network share and not part of the local workstation. Furthermore, it is strongly recommended that you have a clean system before installing any products.

Deployment methods are covered in the Product Distribution chapter (page 57).

## Clean a Primary System and Restore the Operating System

If you have previously run Autodesk products on the primary system, the primary system should be properly cleaned before any master images are created.

- 1 Clean the hard drive, including the boot sector.

For example, if you use the Norton GDISK utility, use the following command; *gdisk 1 /diskwipe*.

Where *1* is the hard disk that is being wiped.

---

**NOTE** If you use imaging software other than Norton Ghost, make sure that it cleans the boot sector; otherwise, you will not be able to activate Autodesk products.

---

- 2 Use your restore CD or DVD or create a new partition and use the product media to install the operating system.

---

**NOTE** A clean system is one that has not had previous Autodesk software installed or run.

---

## Consistent Personalization Data

It is very important that the personalization data (for example, your facility name and contact information) you supply when registering and activating your products is consistent across all Autodesk products that you install. When you register and activate products, you are required to enter information on the electronic registration (EREG) site. If you enter this data incorrectly or inconsistently, you can run into activation problems.

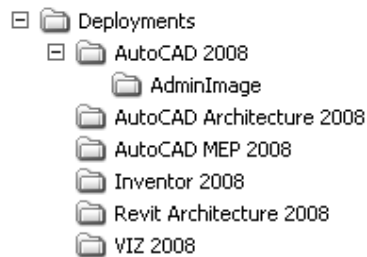
For example, Mr. J. Smith works at a school and has received his software. He decides to install AutoCAD on his personal system and activates the product using his personal information. He then gives the same AutoCAD package to a system administrator to install on the school's network. The system administrator attempts to register and activate the product using the school's personalization data. Since the software license has already been registered and activated by Mr. Smith, the software on the school's network cannot be registered and activated unless Mr. Smith's exact personalization data is re-used.

You can avoid this situation by always using the original personalization data. If you do not know your personalization data, you should contact your Academic Value Added Reseller or the Autodesk Business Center. Refer to Contact Information (page 78).

## Create Shared Folders for Deployments

You use the deployments for both network license and multi-seat stand-alone methods of installation. They both require *shared folders*. A shared folder (*network share*) is a folder that you make available to users' computers over a network. The shared folder is created before you create product deployments and is where product deployments are stored.

It is recommended that you name the network share folder *Deployments*. You can then add subfolders inside the shared *Deployments* folder that clearly convey the names of products you plan to deploy. For example:



Any subfolders that are placed inside a shared folder are automatically shared.

---

**TIP** You must have Full Control permissions set for your shared folder when you are creating your deployment images. Read permissions are necessary to access the network share and administrative permissions on the workstation where the program is deployed.

---

#### To create a shared folder

- 1 On a network server, create a folder named *Deployments*.
- 2 Right-click the *Deployments* folder. Click Sharing and Security (or Sharing).
- 3 In the Properties dialog box, Sharing tab, select Share This Folder.
- 4 Click the Permissions button. In the Permissions dialog box, make sure Full Control is active. Click OK.  
This is important when creating your deployment images.
- 5 Click OK to close the Properties dialog box.
- 6 For each product you plan to install, create a subfolder in the *Deployments* folder. Name each folder with the pertinent product name.

## Installation Support and Types

Before installing any products, you should know which products support creating deployments and the Network License Manager, and the types of installation options you can choose from.

#### Installation Support by Product

When installing a combination of Autodesk products on the same computer, it's beneficial to know which products can be installed through deployments created through the Installation Wizard and which products support the Network License Manager. The following table lists the products categorized by discipline and if they support deployments created through the Installation Wizard, and Network License Manager

Products	Supports Deployment Creation	Supports the Network License Manager
<b>General Design &amp; Drafting Discipline</b>		
AutoCAD 2008	Yes	Yes
<b>Visualization</b>		
Autodesk VIZ 2008	Yes	Yes
<b>Building Design Discipline</b>		
AutoCAD Architecture 2008	Yes	Yes
Revit Architecture 2008	Yes	Yes
AutoCAD MEP 2008	Yes	Yes
<b>Manufacturing Design Discipline</b>		
Autodesk Inventor Professional 2008	Yes	Yes
<b>Infrastructure Design Discipline</b>		
AutoCAD Civil 3D 2008 (includes Land Desktop Companion 2008)	Yes	Yes

## **Installation Types**

The type of licensing you've purchased often dictates what type of installation method you'll use. For products that allow you to create deployments, you will be prompted to specify one of the following installation types.

### **Network Licensed Installation**

If you have a network license you'll use this type of installation. You install the program to workstations with the files and registry entries that allow the program to communicate with the Network License Manager. You also define the location of the Network License Manager so that the licenses can be accessed.

The main advantage is that you can install products on more systems than the number of licenses you have purchased. For example, purchasing 25 licenses but installing on 40 workstations. At any one time, products will run on the maximum number of systems for which you have licenses. This means you get a true floating license.

### **Stand-Alone Installation (Multi-Seat Stand-Alone)**

The concept of multi-seat stand-alone installation is a variation of the stand-alone installation. Multi-seat stand-alone installations do not rely upon a network license manager to manage product licenses, however, you can still use the Installation Wizard to create administrative images and deployment shortcuts.

### **Stand-Alone Installation (Stand-Alone)**

A stand-alone installation differs from a multi-seat stand-alone primarily in that stand-alone products require you to install, register, and activate each program individually on each workstation while the multi-seat stand-alone installation is more automated. In order to install stand-alone products, you have to move from system to system, installing from the product media.



# Installation Quickstarts Overview

The quickstart procedures are set up to give you efficient, step-by-step instructions for installing at your facility. They cover what is necessary to successfully install network licensed, multi-seat stand-alone licensed, and stand-alone licensed products.

# 3

## In this chapter

- Summary of Quickstarts

# Summary of Quickstarts

The purpose of each quickstart is to guide you through and expedite the installation process of any of the products that are included with Autodesk Design Academy 2008.

---

**NOTE** Keep in mind that the installation panels shown in the quickstarts may differ from product to product. Where differences occur, review the options on the panel and proceed or consult the product documentation for specifics.

---

## Network Licensing Quickstart

The Network Licensing Quickstart describes the installation and use of the Network License Manager and the Network License Activation Utility. It also describes how to configure a license server and manually obtain an activation code.

Use the Network Licensing Quickstart if you have network licenses for the following products:

---

### Products

---

- AutoCAD 2008
- Autodesk VIZ 2008
- AutoCAD Architecture 2008
- Revit Architecture 2008
- AutoCAD MEP 2008
- Autodesk Inventor Professional 2008
- AutoCAD Civil 3D 2008

---

## Create Deployments Quickstart

Most AutoCAD-based products require that you create a deployment in order to perform multi-seat stand-alone installations. This quickstart steps you through using the Installation Wizard to create deployment images for the products you need installed.

Use the Create Deployments Quickstart chapter to create deployment images for the following products:

---

**Products**

---

- AutoCAD 2008
  - Autodesk VIZ 2008
  - AutoCAD Architecture 2008
  - Revit Architecture 2008
  - AutoCAD MEP 2008
  - Autodesk Inventor Professional 2008
  - AutoCAD Civil 3D 2008
- 

**Stand-Alone Quickstart**

All the products included in the Design Academy package allow for stand-alone installation. The Stand-Alone Quickstart can be used for any product.



# Network Licensing Quickstart

# 4

If you plan to install your products on a network use the Network License Manager and the Network License Activation Utility.

The Network License Manager determines whether a license is granted or denied to an application that is requesting a license. If a license is available that application starts and a license is checked out. If a license is not available, the application will not start and you will not be able to run the application until a license is returned to the license manager.

The Network License Activation Utility helps you activate and register the network license manager over the Internet.

If you are not familiar with network licensing, please read the entire *AutoCAD 2008 Network Licensing Guide* for further details before you attempt to set up a network license server.

## In this chapter

- Install the Network License Manager
- Install the Network License Activation Utility
- Run the Network License Activation Utility (online request)
- Run the Network License Activation Utility (offline request)
- Configure a License Manager
- Licensing Multiple Products

The Network License Manager is used in conjunction with the Installation Wizard. You can use the Network License Manager with the following products:

---

**Product**

---

- AutoCAD 2008
  - Autodesk VIZ 2008
  - AutoCAD Architecture 2008
  - Revit Architecture 2008
  - AutoCAD MEP 2008
  - Autodesk Inventor Professional 2008  
(includes AutoCAD Mechanical 2008, Autodesk Inventor 2008, Autodesk Vault 2008, and Autodesk Design Review 2008)
  - AutoCAD Civil 3D 2008 (includes Land Desktop Companion 2008)
-

# Install the Network License Manager

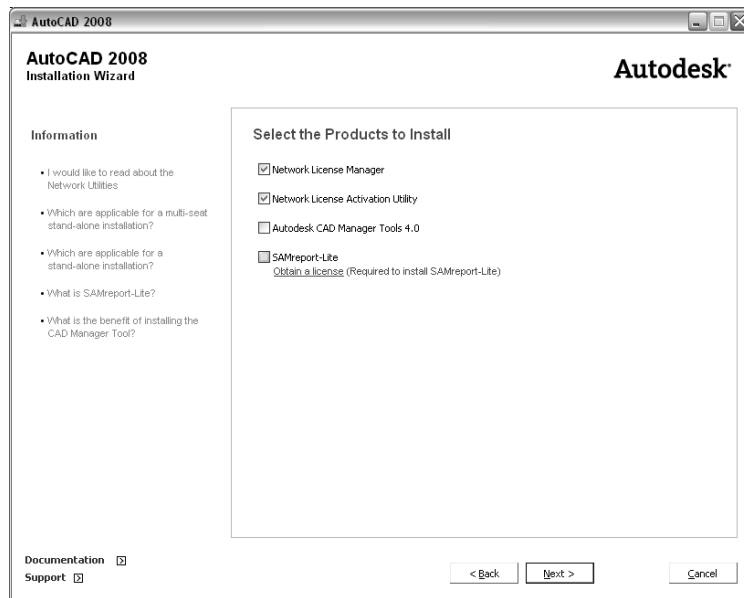
The Network License Manager is used to configure and manage the license servers.

---

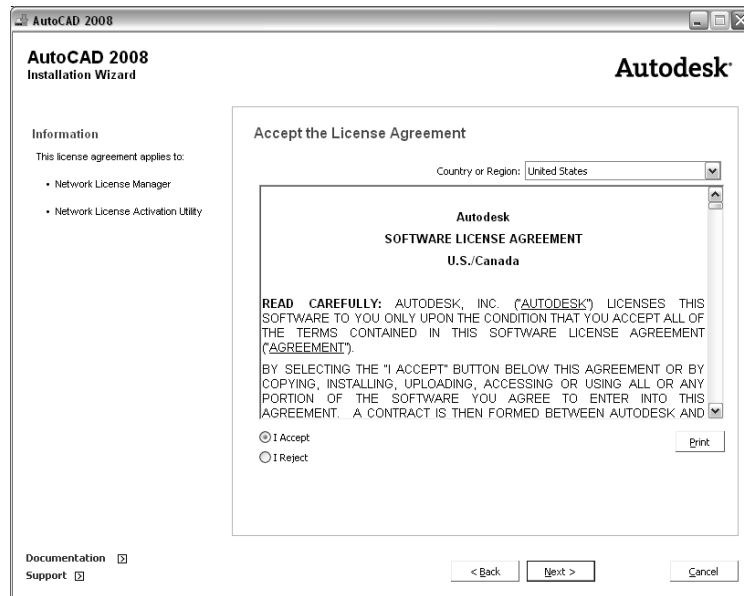
**NOTE** You need to use the 2008-based version of the Network License Manager.

---

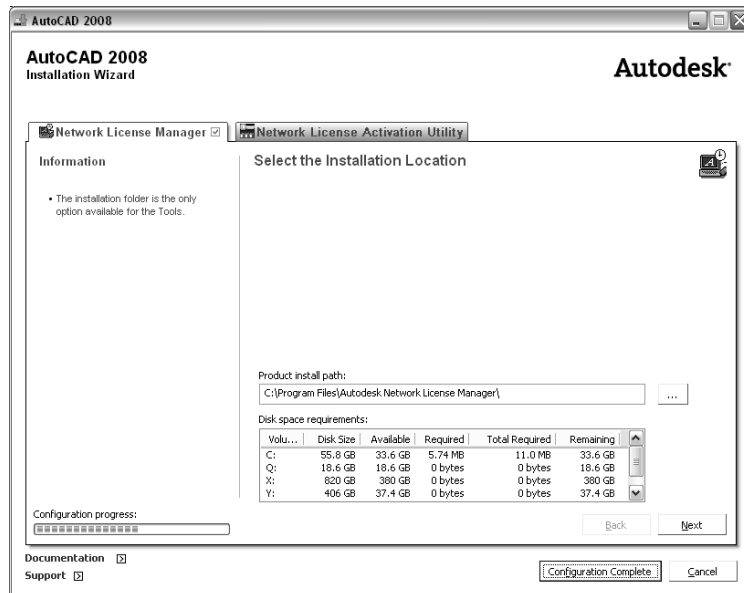
- 1 Insert the Autodesk product media in the media drive of the computer where you want to install the Network License Manager.
- 2 In the Autodesk Installation Wizard, click Install Tools and Utilities.
- 3 On the Welcome to the Autodesk Installation Wizard page, click Next.
- 4 On the Select the Products to Install page, make sure Network License Manager is selected and click Next.



- 5 Review the Autodesk software license agreement for your country or region. You must accept this agreement to proceed with the installation. Choose your country or region, click I Accept, and then click Next.



- 6 On the Review - Configure - Install page, click Configure.
- 7 Click the Network License Manager tab, if multiple product were selected in step 3.
- 8 On the Select the Installation Location page, either accept the default installation path (C:\Program Files\Autodesk Network License Manager\ ) or click [...] to specify a different path. If you enter a path that does not exist, a new folder is created using the name and location you provide. Click Configuration Complete.



**WARNING** Do not install the Network License Manager on a remote drive. When you install the Network License Manager files, you must provide a path to a local drive. You must specify the drive letter; the universal naming convention (UNC) is not supported.

- 9 Once returned to the Review - Configure - Install page, click Install to begin installing the Network License Manager and any other selected tools and utilities.
- 10 When the Installation Complete page displays, click Finish.

## Install the Network License Activation Utility

With the Network License Activation utility, you can obtain licenses over the Internet, which saves time and effort in setting up a network-licensed version of the program. In addition, you can register your product, get automated support by email if you cannot obtain a license over the Internet, and save and migrate license files automatically.

Each product has its own Network License Activation utility that must be used to obtain a license for that specific product. The Network License Activation utility is installed from the product media.

- 1 In the Autodesk Installation Wizard, click Install Tools and Utilities.
- 2 On the Welcome to the Autodesk Installation Wizard page, click Next.
- 3 On the Select the Products to Install page, make sure Network License Activation Utility is selected and click Next.

---

**NOTE** If the Network License Activation Utility for another Autodesk product is already installed, you may be prompted to repair or remove it. Remove the existing utility, and then install the Network License Activation utility for the product you are activating.

---

- 4 Review the Autodesk software license agreement for your country or region. You must accept this agreement to proceed with the installation. Choose your country or region, click I Accept, and then click Next.

---

**NOTE** If you do not agree to the terms of the license and wish to terminate the installation, click Cancel.

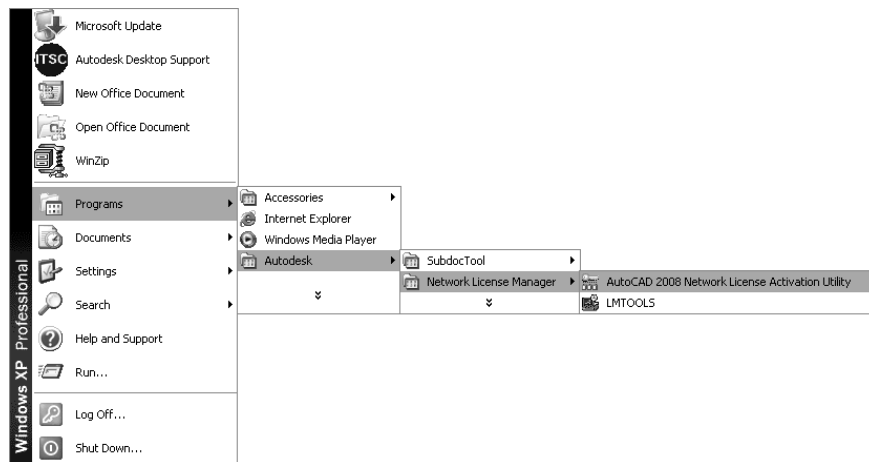
---

- 5 On the Review - Configure - Install page, click Configure.
- 6 Click the Network License Activation Utility tab, if multiple product were selected in step 3.
- 7 On the Select the Installation Location page, either accept the default installation path (*C:\Program Files\Autodesk Network License Manager\Network License Activation Utility\enu\*) or click [...] to specify a different path. If you enter a path that does not exist, a new folder is created using the name and location you provide. Click Configuration Complete.
- 8 Once returned to the Review - Configure - Install page, click Install to begin installing the Network License Activation Utility and any other selected tools and utilities.
- 9 When the Installation Complete page displays, click Finish.

# Run the Network License Activation Utility (online request)

After installing the Network License Activation Utility, you can use the utility to activate your product.

- 1 On the Start menu (Windows), click All Programs (or Programs) ► Autodesk ► Network License Manager ► (Product Name) Network License Activation Utility.



- 2 On the Obtain a Network License page, make sure Direct Connect (over the Internet) is active, and then click Next.
- 3 On the Server Information page, enter the following data:
  - The product serial number or Group ID

---

**NOTE** If you are modifying an existing license file or obtaining a new license for an existing product, your previously entered information might be displayed. Make sure that the serial number that is displayed is the one you want to license. If it is not, enter the correct product serial number.

---

- The license server model  
For more information about each license server model, click the ? button.
- The server host name

If you don't know the host name, click the [...] button to locate the name of each server you plan to use.

---

**NOTE** In a Distributed server model, you are limited to a maximum of 20 servers. Once the 20 server limit has been reached, the Add button disappears.

---

- The host ID, for each server host name you entered  
If you cannot find the host ID, click Lookup to have the utility automatically locate the host ID for the server(s).  
Your system(s) server host name and host ID is in the same location that the network license manager is installed. The host ID is also known as the Ethernet address, MAC address, or physical address. It is not the IP address. You can obtain the host name and host ID by running Start menu > Programs > Autodesk > Network License Manager > LMTOOLS on the computer where the network license manager is installed. The information is found on the System Settings tab under Host name and Ethernet address.

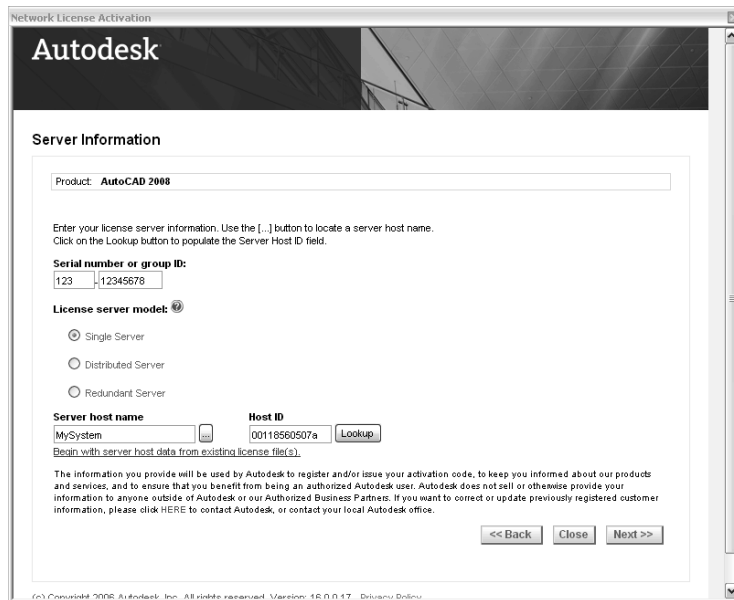
---

**NOTE** If your server has more than one network adapter, select the one that corresponds to a physical network adapter. To determine which adapters are physical, enter `ipconfig /all` at a Windows command prompt and view the Description field above each physical address. If there is more than one physical network adapter, you can use any one of them, as long as it was listed when you ran `ipconfig /all`. Logical devices such as VPN adapters, PPP adapters, and modems may be listed but are not usable for licensing.

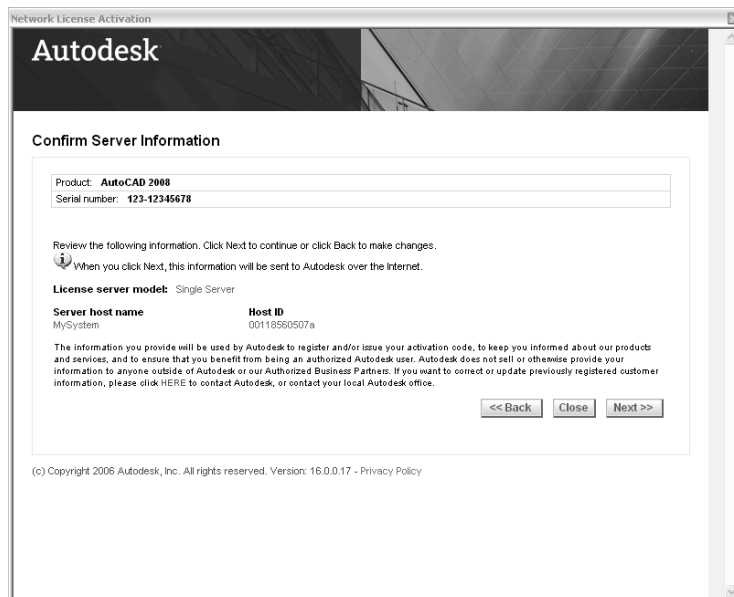
---

- The number of seats for each license server  
If you choose a Distributed server model, the Seats box is displayed. Enter the number of seats for each license server.

Click Next.



- 4 On the Confirm Server Information page, review the server information you entered, and click Next.



- 5 On the License(s) Received page, in the Save License File for [*computer name*] field, enter the location where you want to save your license file, or click Browse to navigate to the location.

---

**NOTE** It is recommended that you save your license file to the location where you installed the Network License Manager.

---

The content of this page will differ depending on which server model you selected.

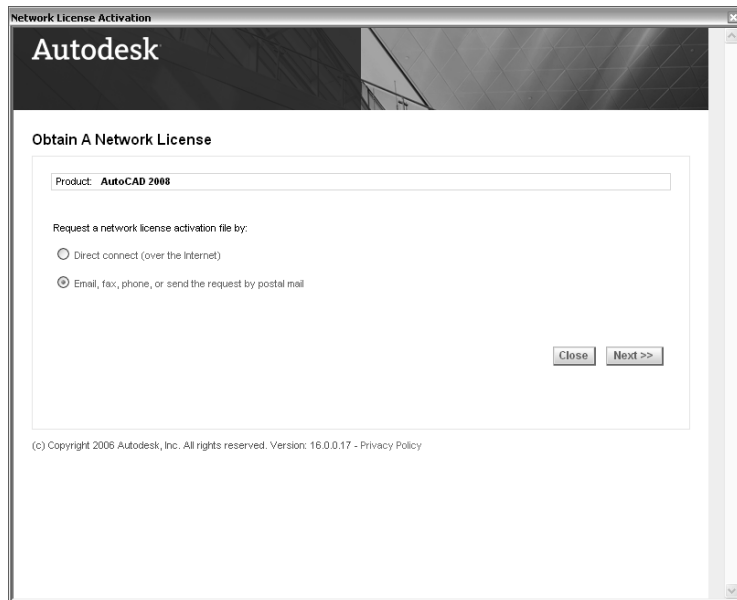
Click Next.

- 6 On the License Activation Successful page, click Print to save a printed copy of the license information, or click Done to complete the transaction and exit the Network Activation utility.

## Run the Network License Activation Utility (offline request)

Some customers prefer to obtain the license file for the network license manager without using the Network License Activation utility.

- 1 On the Start menu (Windows), click All Programs (or Programs) ► Autodesk ► Network License Manager ► (Product Name) Network License Activation Utility.
- 2 On the Obtain a Network License page, make sure Email, fax, phone or send the request by postal mail is active, and then click Next.



3 On the Server Information page, enter the following data:

- The product serial number or Group ID

---

**NOTE** If you are modifying an existing license file or obtaining a new license for an existing product, your previously entered information might be displayed. Make sure that the serial number that is displayed is the one you want to license. If it is not, enter the correct product serial number.

---

- The license server model  
For more information about each license server model, click the ? button.

- The server host name  
If you don't know the host name, click the [...] button to locate the name of each server you plan to use.

---

**NOTE** In a Distributed server model, you are limited to a maximum of 20 servers. Once the 20 server limit has been reached, the Add button disappears.

---

- The host ID, for each server host name you entered

If you cannot find the host ID, click Lookup to have the utility automatically locate the host ID for the server(s).

Your system(s) server host name and host ID is in the same location that the network license manager is installed. The host ID is also known as the Ethernet address, MAC address, or physical address. It is not the IP address. You can obtain the host name and host ID by running Start menu > Programs > Autodesk > Network License Manager > LMTOOLS on the computer where the network license manager is installed. The information is found on the System Settings tab under Host name and Ethernet address.

---

**NOTE** If your server has more than one network adapter, select the one that corresponds to a physical network adapter. To determine which adapters are physical, enter ipconfig /all at a Windows command prompt and view the Description field above each physical address. If there is more than one physical network adapter, you can use any one of them, as long as it was listed when you ran ipconfig /all. Logical devices such as VPN adapters, PPP adapters, and modems may be listed but are not usable for licensing.

---

- The number of seats for each license server  
If you choose a Distributed server model, the Seats box is displayed. Enter the number of seats for each license server.

Click Next.

- 4 On the Confirm Server Information page, review the server information you entered, and click Next.
- 5 On the Product Registration page, do all of the following:
  - Choose whether the product will be registered to the Company or Individual.
  - Select your country or region of residence.
  - Specify whether this is a product upgrade.

Click Next.

- 6 Enter your personalization data on the Customer Information page and choose how you'd like to receive your activation code. Click Next.

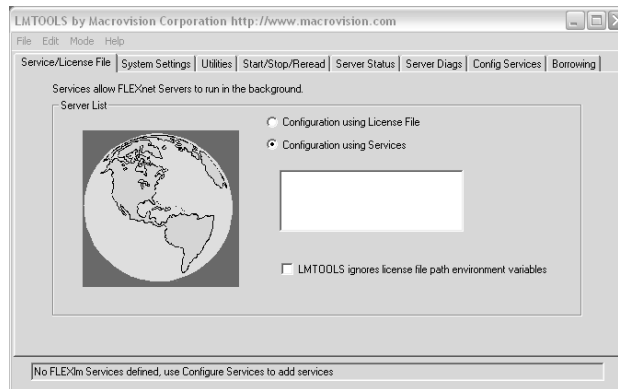
- 7 Review your personalization data on the Confirm Information page and choose the method you'll use to submit your request.
  - If you submit your request by email, you will be sent your activation code by the method you specified on the Customer Information page.
  - If you submit your request by fax, phone, or postal mail, the Contact Autodesk page is displayed containing the Autodesk fax number, phone number and mailing address. You can also print your activation request form.
- 8 Click Close.

## Configure a License Manager

You configure a license manager so that you can manage the Autodesk product licenses you received when you ran the Network License Activation utility. Configure the license server with the *lmttools.exe* utility.

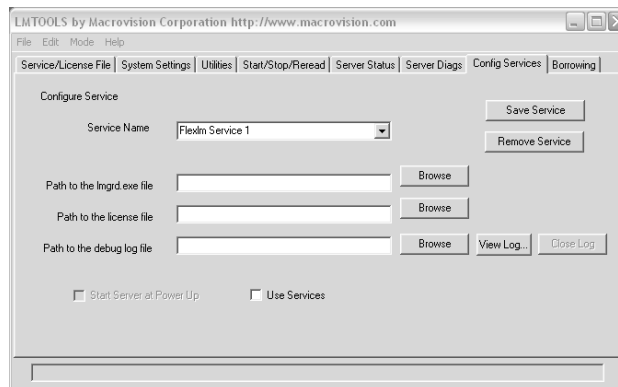
You should be logged in with Administrator rights when working with the LMTOOLS utility.

- 1 Do one of the following:
  - On Windows XP & 2000 click Start menu ► All Programs (or Programs) ► Autodesk ► Network License Manager ► LMTOOLS.
  - On Windows Vista, right-click the LMTOOLS icon on the desktop and choose Run As Administrator.
- 2 In the Lmttools program, on the Service/License File tab, make sure the Configuration using Services option is active.



- 3 Click the Config Services tab.
- 4 In the Service Name list, do one of the following:
  - If a service name is selected, verify that it is the one you want to use to manage licenses.
  - If no service name exists, enter the service name you want to use to manage licenses.

By default, the service name is *Flexlm Service 1*. Your service name may be different.




---

**NOTE** If you have more than one software vendor using FLEXlm® for license management, the Service Name list contains more than one option. Make sure that only one Autodesk service is listed.

---

- 5 In the Path to *lmgrd.exe* File field, enter the path to the Network License Manager daemon (*lmgrd.exe*), or click Browse to locate the file.

By default, this daemon is installed in the *\Program Files\Autodesk Network License Manager* folder.

In the Path to the License File box, enter the path to your license file, or click Browse to locate the file.

This is the path to the license file obtained by the Network License Activation utility or the location where you placed the license file if you obtained it offline.

In the Path to the Debug Log File box, enter a path to create a debug log, or click Browse to locate an existing log file.

It is recommended that you save to the *\Program Files\Autodesk Network License Manager* folder. The log file must have a *.log* file extension. For new log files, you must enter the *.log* extension manually.

- 6 To run *lmgrd.exe* as a service, select Use Services.
- 7 To automatically start *lmgrd.exe* when the system starts, select Start Server at Power Up.
- 8 Click Save Service to save the new configuration under the service name you selected in step 4. Click Yes when prompted if you would like to save the settings to the service.
- 9 Click the Start/Stop/Reread tab and do one of the following:
  - If a service has not yet been defined for Autodesk and running, click Start Server to start the license server.
  - If a service for Autodesk is already defined and running, click ReRead License File to refresh the Network License Manager with any changes made to the license file or Options file.  
The license server starts running and is ready to respond to client requests.
- 10 Close *lmtools.exe*.

## Licensing Multiple Products

In order to activate each network licensed product you install, it is issued its own license file by Autodesk. You can manage license files for more than one Autodesk product by combining license files. To combine multiple license

files for Autodesk products, you must add lines from the new license file to the existing license file.

Before you begin combining licenses, backup your existing LIC file and stop the license server. Stopping the server will ensure you have a cleaner update.

---

**NOTE** Do not configure a separate service for the new Autodesk product.

---

- 1 Open an ASCII text editor, such as Microsoft Notepad.  
Do not use a word processor because it will add extra data to the license file that will make the license invalid.
- 2 Open your AutoCAD 2008 license file.
- 3 Next, open one of your other license file in a separate Notepad session.
- 4 In license file, select all the text starting at the line beginning with 'INCREMENT'.
- 5 Copy the text and paste into the AutoCAD 2008 license file.

The resulting file should look like this.

```
SERVER Server1 1abc23456cba
USE_SERVER
VENDOR adskflex port=2080
INCREMENT 54600ACD_2008_OF adskflex 1.000 permanent 1 \
  VENDOR_STRING=commercial:permanent BORROW=4320 SUPERSEDE \
  DUP_GROUP=UH ISSUED=09-May-2007 SN=123-12345678 SIGN="064D \
  CAE8 ACB5 AA01 75AB 11E4 5374 40E5 A325 80F1 3C52 7087 9236 \
  71C4 83CD 0A03 D5B0 2D24 B6AB B094 BC85 A8D6 5061 B003 5E72 \
  9DA0 BA48 B517 FED9 6D2E" SIGN2="0BA1 37ED 502D 2745 AAC0 A21E \
  0BE0 76E5 4415 1565 6DA8 DF0C 0354 627F 1B90 1B92 A38D F416 \
  BA54 42BB 35FA 7642 1E78 0C37 09A7 F2CE B371 2450 EDB4 3418" \
INCREMENT PLIST adskflex 1.000 permanent 1 \
  VENDOR_STRING=A07:51600ACDLAND_2007_OF:52200CIV3D_2007_OF;B07:51900AMECH_PP_2007_OF:51300INVBUN_11_ \
  OF:52900INVPRORS_11_OF:53000INVPROSIM_11_OF:51400INVPRO_11_OF;C07:51200ACD_2007_OF:52500REVITS_9_OF \
  :54100REVITS_9_1F:53700REVSU_3_OF:54200REVSU_4_OF;D07:52600REVIT_9_OF:52500REVITS_9_OF;E07:54600ACD \
  _2008_OF:55000INVBUN_2008_OF;F07:51800BLDSYS_2007_OF:53100REVSYP_1_OF:54500REVSYP_2_OF;G07:53400REV \
  ITST_3_OF:53700REVSU_3_OF;H07:54300REVIT_9_1F:54100REVITS_9_1F;I07:54400REVITST_4_OF:54200REVSU_4_0 \
  F;A08:55500ACDLAND_2008_OF:55400CIV3D_2008_OF;B08:54900AMECH_PP_2008_OF:55000INVBUN_2008_OF:55100IN \
  VPRORS_2008_OF:55200INVPROSIM_2008_OF:55300INVPRO_2008_OF;C08:54600ACD_2008_OF:54700REVITS_2008_OF: \
  54800REVSU_2008_OF;D08:57100REVIT_2008_OF:54700REVITS_2008_OF;F08:55600BLDSYS_2008_OF:55700REVSYP_2 \
  008_OF;G08:57200REVITST_2008_OF:54800REVSU_2008_OF \
  SUPERSEDE ISSUED=09-May-2007 SIGN="118D FE87 080E 95EE 0A3F \
  5A08 0519 CBFA 8E60 7000 8E78 D182 A79D 6A04 C085 0473 4C4E \
  7E82 8E21 511D BAE3 2CE9 F2F2 00B9 FF64 58B5 6C66 1E94 6197 \
  E6A0" SIGN2="0366 D374 16A4 6BB7 0352 9F81 9175 E5D4 5665 CB41 \
  027A B031 EE8D 1608 570B 0B71 8952 C39E 3B32 5219 D9EC 3377 \
  D0FA 2B04 ECL9 648C 068B DC08 642A BF98" \
INCREMENT 5690QVIZ_2008_OF adskflex 1.000 permanent 1 \
  VENDOR_STRING=commercial:permanent BORROW=720 SUPERSEDE \
  DUP_GROUP=UH ISSUED=09-May-2007 SN=123-12345678 SIGN="17D4 \
  7E23 2A1F 8BD6 DEF9 FB62 6D13 1B2D B030 2A50 863C E25A 1AC9 \
  D02A F976 11A1 D6B1 B0D1 5F89 A5DF 406F 260A CEDE A249 32BB \
  6500 665E 217C B33C 4B86" SIGN2="0FE3 C766 8F79 856A 844E 1867 \
  875F 8539 BABB 2D9E 4934 A542 E3C3 E465 74BE 1741 671E E759 \
  1508 5919 BC14 9293 062E 8CCC 7C18 540A F4D3 4400 D776 6476"
```

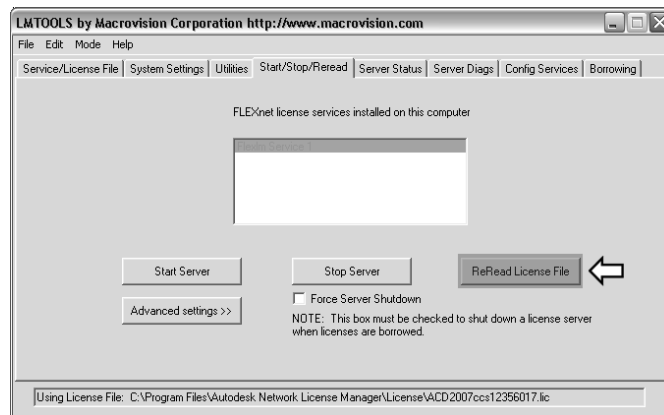
When combining additional licenses for the same Autodesk product, you must obtain a new license file for the total number of licenses with that feature code, not just the new ones. For example, do not combine two different AutoCAD 2008 license files into one file. Obtain one new license file that contains the required total number of AutoCAD 2008 licenses.

---

**NOTE** If a server has more than one network adapter installed, all of the Autodesk products should be bound to the same adapter.

---

- 6 Once the license files are combined, open LMTOOLS and click the Start/Stop/Reread tab.
- 7 Click on the Server Status tab and check the status of the server to make sure it's running.
- 8 Click on the Start/Stop/Reread tab. Click the Reread License File button to make the changes to the license file have taken effect.



- 9 Close *lmtools.exe*.



# Create Deployments Quickstart

Network deployments require careful planning and execution. This section gives you quick, step-by-step instructions about how to use the Installation Wizard to create deployments which can then be used to distribute the program.

See Installation Support and Types (page 13) for a list of those products that allow you to create deployments through the Installation Wizard.

# 5

## In this chapter

- Use the Installation Wizard to Set Up a Deployment

# Use the Installation Wizard to Set Up a Deployment

The deployment process is initiated from the Installation Wizard. After deployments are created, you can install the program on the computers in your facility. You make choices during the deployment process to create various client deployment images and deployment types that meet user requirements and facility needs.

The deployment process lets you do any of the following:

- Create a deployment.
- Apply a patch to a deployment.
- Add customized files to a deployment.
- Change search paths and file locations.

## Creating a Deployment

Once you have started the Installation Wizard, you can initiate the deployment process to set up a deployment.

---

**NOTE** Because the deployment process provides you with numerous options for creating and customizing your deployments, there are many deployment pages you need to complete and choices you must make. You should set aside ample time to complete the deployment process in one sitting.

---

### To create a deployment

- 1 Insert the product media into the media drive.
- 2 In the Installation Wizard, click Create Deployments.



- 3 On the Welcome page, click Next.

- 4 On the Begin Deployment page, enter a deployment location or click the [...] button to browse your drive for a location. In the Specify the Deployment Name field, enter the deployment name. This is the name of the shortcut your users will access to install the product. To prevent users from changing your installation settings when they install the product, select Client Installations Will Be Run in Silent Mode.

---

**NOTE** The deployment location should be a shared network folder. To create a shared folder, see [Create Shared Folders for Deployments](#) (page 12).

---

**Begin Deployment**

Specify the deployment location:

Specify the deployment name:

Client installations will be run in silent mode.

- 5 Click Next.
- 6 On the Products to Install page, make sure the required products are checked, and click Next.
- 7 Review the Autodesk software license agreement for your country or region. You must accept this agreement to proceed with the installation. Choose your country or region, click I accept, and then click Next
- 8 On the Personalize the Products page, enter the requested data.

---

**NOTE** Although it is required that you enter information in each box on this page, you can enter any information that you want to convey to users who install the deployment.

---

- 9 Enter your product serial number. The product serial number is located on the product packaging. The serial number has a three-digit prefix followed by an eight-digit number.



**Personalize the Products**

\* indicates a required field

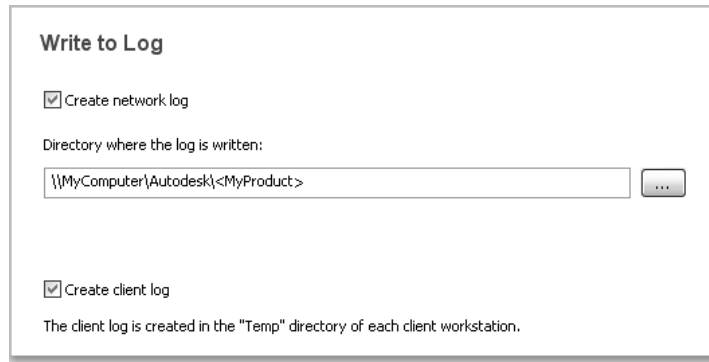
\*First name:

\*Last name:

\*Organization:

\* Serial number/Group ID:

- 10 Click Next.
- 11 On the Write to Log page, select the Create network log check box. Enter the name of the folder where you want the network log to be located. Select the Create Client Log option.



**Write to Log**

Create network log

Directory where the log is written:

Create client log

The client log is created in the "Temp" directory of each client workstation.

- 12 Click Next.
- 13 On the Review - Configure - Create Deployments page, click the Configure button.

## Review - Configure - Create Deployments

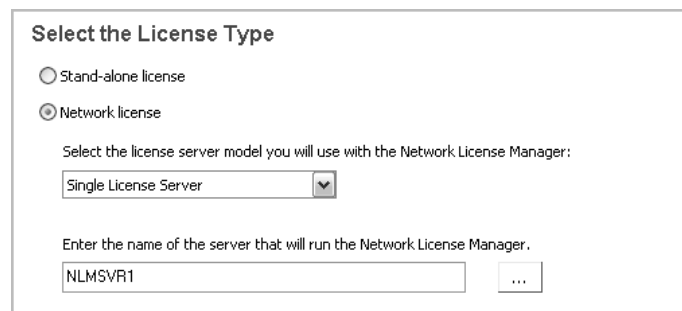
The basic information required to install the products has been provided by you and is shown in the box below. The remaining configurations are currently set to the default values; also shown below. If you would like to make configuration changes, select the appropriate product from the drop down list and click the Configure button.

Select a product to configure:



AutoCAD Civil 3D 2008 [v] Configure

- 14 On the Select the License Type page, select the Network License option. You can choose from two installation types: Network or Stand-Alone. If you've purchased a network license for multiple seats of software, use the Network installation. If you've purchased multi-seat stand-alone licenses, use the Stand-Alone installation. Network Installation is the recommended method.
- 15 Select Single License Server as the License Server Model you will use with the Network License Manager. If you have already used the Network License Manager to create a license server model, you must select the same license server model in this step. If you have not yet used the Network License Manager to create a license server model, make sure that you select the same settings in the Network License Manager that you choose here.
- 16 Enter the server name of the server that will run the Network License Manager, or click the [...] button to locate the server.



**Select the License Type**

Stand-alone license

Network license

Select the license server model you will use with the Network License Manager:

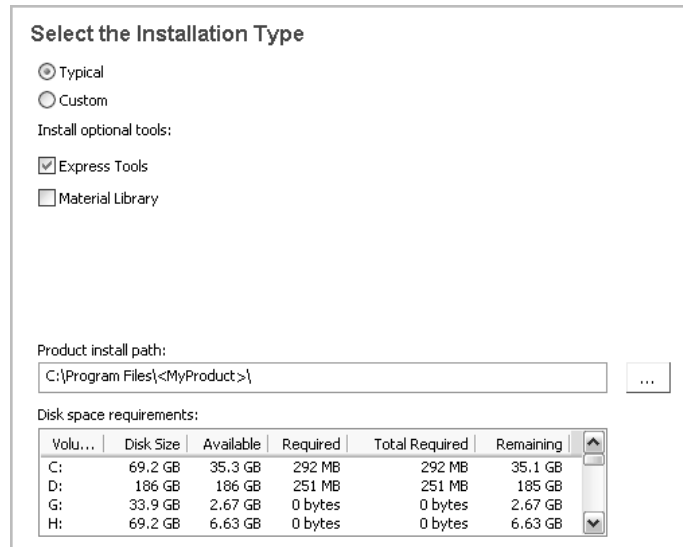
Single License Server [v]

Enter the name of the server that will run the Network License Manager.

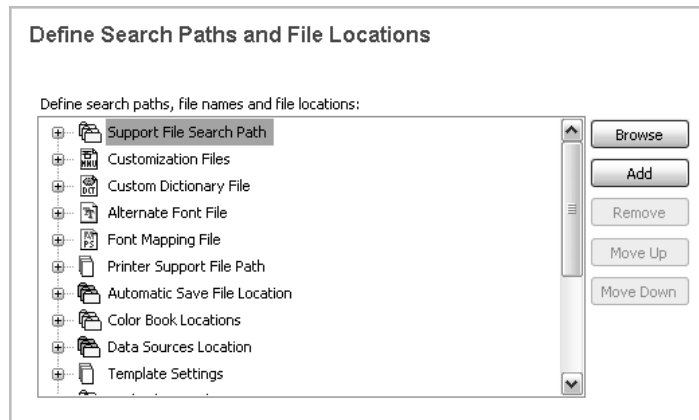
NLMSVR1 [ ] [...]

- 17 Click Next.
- 18 On the Select the Installation Type page, select the Typical option as the type of installation that you want. Clear the check box for the Express

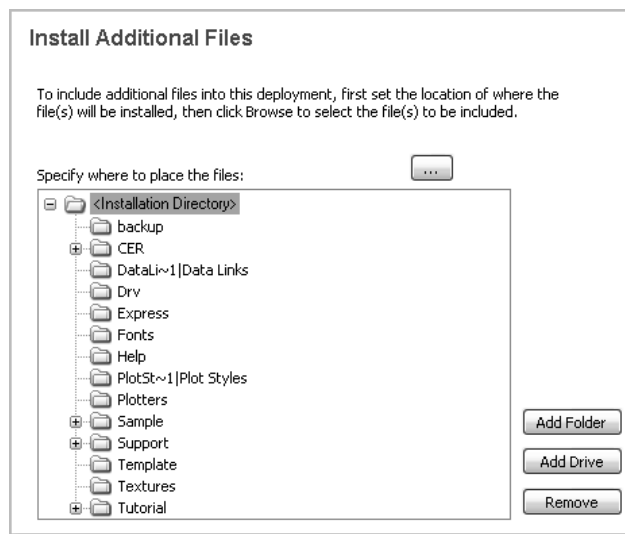
Tools option if you do not want to include the tools in this deployment. Express Tools are installed by default. If you want to install the Material Library, select the check box for the Material Library option.



- 19 Enter the path on the client workstation where you want to install the program, for example C:\Program Files\*product name*, or click the [...] button to specify the install location.  
The Disk Space Requirements chart lets you review available drives and disk space.
- 20 Click Next.
- 21 On the Define Search Paths and File Locations page, accept the defaults and click Next.



22 On the Install Additional Files page click Next.



23 On the Specify User Preferences page, accept the defaults and click Next.

### Specify User Preferences

Yes, I wish for Internet Explorer to be required for installations

Set the default profile name:

Choose a default text editor:

Create a desktop shortcut

Create custom desktop shortcuts:

Shortcut name	Shortcut parameters
<type shortcut name>	<type parameter>

- 24 On the Include Service Packs page you have the option to download any available service packs and include them with your deployment. Click Next.

### Include Service Packs

If service packs are available for your product, you may download them from Autodesk and include them with the product's deployment.

To include service packs, you must extract and save the MSP file.

You will then use the browse button to locate the MSPs to be added into the service pack(s) list below.

Use the Remove button to remove selected service packs from the list.

Service packs included in this deployment:

Append the service packs onto the deployment.

Merge the service packs into the administrative image MSI file.

- 25 On the Configure InfoCenter Communication Center page, the Configure InfoCenter Search Results page, and the Configure Access to Online Resources page, accept the defaults.

## Configure InfoCenter Communication Center

### Communication Center Panel

Enable live updates

Receive Live Updates from Autodesk

Local patch list location:

...

Enable Information Channels

Enable CAD Manager Channel

Feed location:

\\server\feed\myfeed.xml

Display name:

CAD Manager Channel

Enable RSS feeds

Allow user to add RSS feeds

## Configure InfoCenter Search Results

Allow user to customize search locations

## Configure Access to Online Resources

### Specify the ability to access online tools:

Enable DesignCenter(DC) Online

Allow access to Subscription Center from within the Autodesk product (recommended)

### Specify the Customer Error Reporting (CER) settings:

Allow users to receive notifications of resolution

Include computer name in error reports

### Specify the Customer Involvement Program settings:

Allow users to choose to participate in the Customer Involvement Program(recommended)

- 26 On the Configuration Complete page, click the Configuration Complete button.

---

**NOTE** If you are deploying more than one product, select the next product tab at the top of the page to create the next deployment.

---

## Final Review and Complete Setup

To complete your deployment setup, confirm the settings you selected.

- 1 On the Review - Configure - Create Deployments page, scroll the list of current settings and verify your installation selections.

**Review - Configure - Create Deployments**

The basic information required to install the products has been provided by you and is shown in the box below. The remaining configurations are currently set to the default values; also shown below. If you would like to make configuration changes, select the appropriate product from the drop down list and click the Configure button.

Select a product to configure:

<MyProduct> [v]    Configure

Current settings:

License type:	Network License
License server model:	Single Server License
Server name(s):	MyNetworkServer
Install type:	Typical
Express Tools:	Yes
Material Library:	No
Install location:	C:\Program Files\MyProgram\
Search paths/file locations:	
Additional files included:	
Default text editor:	Notepad
Silent installation:	Yes
Internet Explorer is required:	Yes
Default profile:	<<Unnamed Profile>>
Create a shortcut:	Yes
Custom shortcuts:	
Service packs applied:	

Print

- 2 Click the Configure button if you need to change any selections.
- 3 Click the Print button if you want a hardcopy of the installation information.
- 4 Click Create Deployment.
- 5 On the Deployment Complete page, click Finish.

You have created an Autodesk product deployment with precise options that are specific to your group of users. You can now use this deployment to install the program.



# Stand-Alone Quickstart

# 6

All the products allow for stand-alone installations. For these types of installations, follow the Stand-Alone Products Quickstart.

## In this chapter

- Stand-Alone Products

## Stand-Alone Products

Stand-alone installation requires manual installation on each computer in your facility.

- Using the product media, move from system to system installing the product.
- If the environment is networked, create a network share for the product and copy the contents of the media to the shared folder. From each satellite system, run the *setup.exe* file from the primary server.

---

**NOTE** Some installation panels may differ depending upon the product you're installing. Where differences occur, always follow the directions on installer panel.

---

### To install products on each system

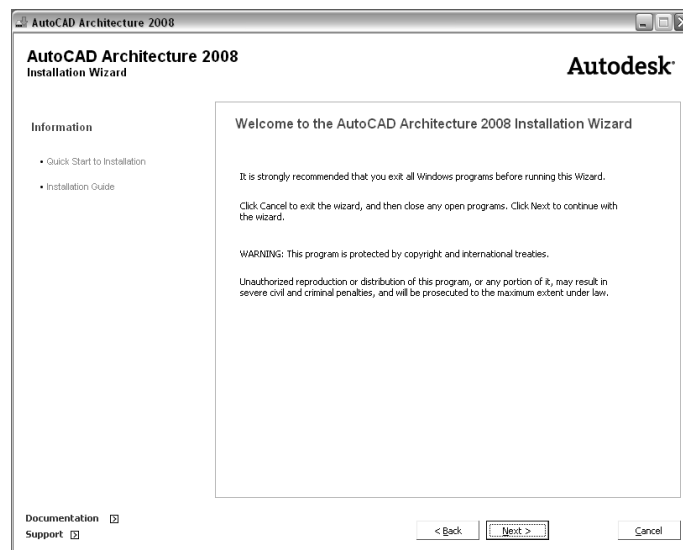
- 1 Insert the Autodesk product media into the media drive and click Install Products on the first screen that appears.

---

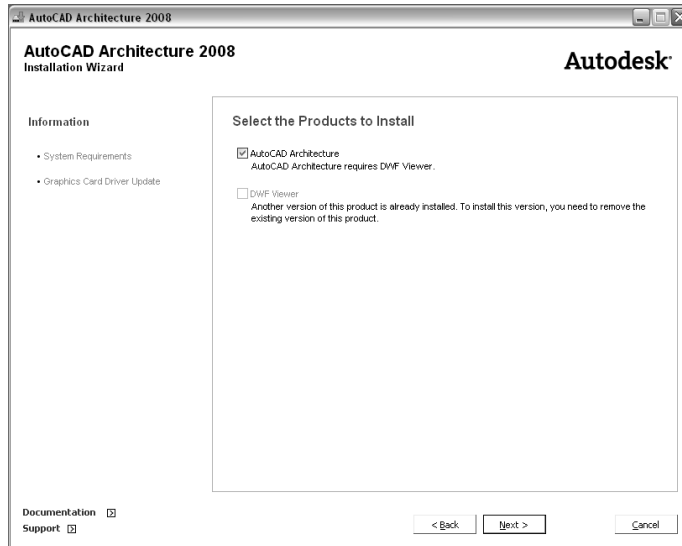
**NOTE** In this procedure, AutoCAD Architecture 2008 has been used as the example for a stand-alone installation.

---

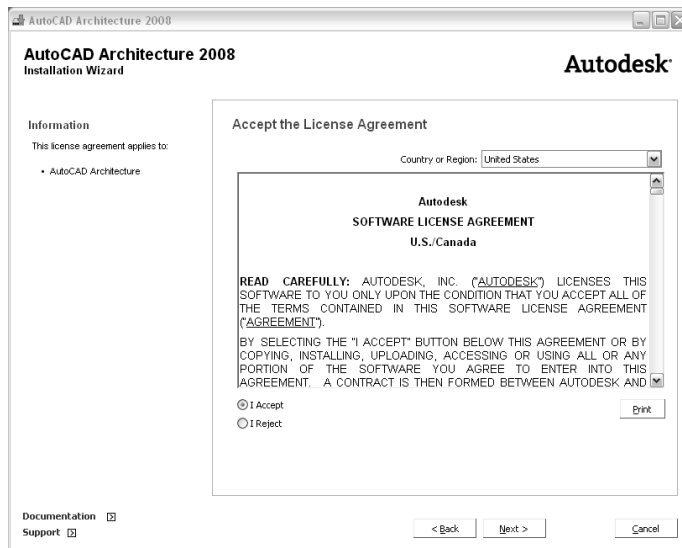
- 2 On the Welcome page of the Installation Wizard, click Next.



- 3 Select AutoCAD Architecture 2008 on the Select the Products to Install page if its not already selected, and then click Next.



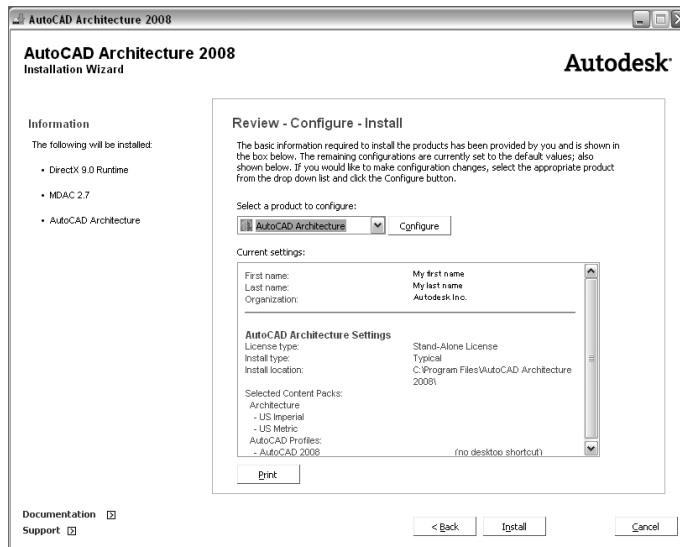
- 4 Select I Accept on Accept the License Agreement page. Click Next.



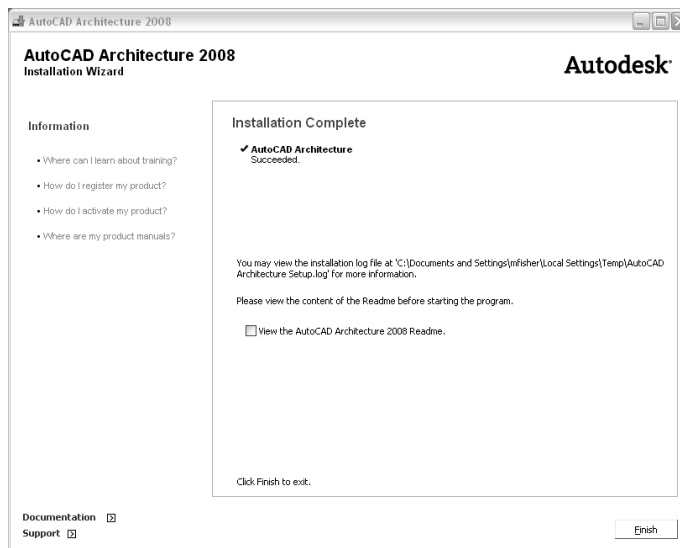
- 5 On the Personalize the Products page, fill out your personal or your institution's information, and then click Next.

The screenshot shows the 'AutoCAD Architecture 2008 Installation Wizard' window. The title bar reads 'AutoCAD Architecture 2008'. The window has a header with 'AutoCAD Architecture 2008 Installation Wizard' on the left and the 'Autodesk' logo on the right. The main content area is titled 'Personalize the Products' and includes a note: '\* indicates a required field'. Below this, there are three text input fields: '\*First name:' with the placeholder 'My first name', '\*Last name:' with the placeholder 'My last name', and '\*Organization:' with the placeholder 'Autodesk, Inc.'. On the left side of the window, there is an 'Information' section with a bullet point: '• What is this information used for?'. At the bottom left, there are links for 'Documentation' and 'Support'. At the bottom right, there are three buttons: '< Back', 'Next >', and 'Cancel'.

- 6 On the Review - Configure - Install panel, review the installation information or make any changes you wish to the install information. Note that you also have the choice to Print the information on this panel. After you have reviewed the information, click Install.



7 When the installation is complete, click Finish.



---

**NOTE** Some programs may prompt you to restart your system. If you have more programs to install, complete those installations and then restart your system.

---



# Product Distribution

# 7

Once products have been installed on the primary system, it's time to distribute the products throughout the classroom or lab. There are two common ways to do this

- Run the shortcuts contained within the deployments created by the Installation Wizard on each computer.
- Run the shortcut contained within the deployment created by the Installation Wizard and then use imaging software, such as Norton Ghost, to create a master image that can be replicated to additional computers.

## In this chapter

- Installation by Deployments
- Distribution by Imaging Software

## Installation by Deployments

After you've created all the administrative images of the products you need to install in your classroom or lab, you can begin the distribution process. You use the deployment shortcuts that were created by the Installation Wizard.

---

**TIP** You must have local administrative permissions on each system where you want to distribute Autodesk products.

---

### Install Network-Deployed Products to a System

- 1 Log on to one of the systems in the classroom or lab.
- 2 Browse to where the shared folder (*Deployments*) resides.
- 3 Double-click the deployment shortcut icon to install the product.
- 4 Browse to the shared folder of the product you want to install.
- 5 Run the product before moving to the next system.
- 6 Move to the next system and repeat these steps.

### Install Multi-Seat Stand-Alone Products to a System

- 1 Log on to one of the systems in the classroom or lab.
- 2 Browse to where the shared folder (*Deployments*) resides.
- 3 Double-click the deployment shortcut icon to install the product.
- 4 Browse to the shared folder of the product you plan to install.
- 5 Repeat this on each system in the classroom or lab.

## Distribution by Imaging Software

Imaging software, such as Norton Ghost, is used to create a master image of a computer where Autodesk products have been installed. The master image is then replicated to other computers throughout your facility.

Using imaging software can result in the following situations:

- Conflicts with product licensing

## ■ Incomplete product installations

---

**NOTE** If you are experiencing licensing instability in a SATA RAID environment, using imaging software to distribute Autodesk products can cause product activation problems. You may receive an "Activation code limit exceeded" message if you attempt to activate products in a SATA RAID environment. Refer to System Issues.

---

### **Use a Master Image to Distribute Network Licensed Products to Multiple Systems**

A master image can be used to distribute network licensed products to multiple systems in your classroom or lab environment.

- 1 Following the quickstarts for your network licensed product, create a network deployment for installing network applications.
- 2 Using the deployment shortcut that was created for the product, install the Autodesk product on the system to be imaged.
- 3 After the Autodesk product has been installed, use imaging software to create a master image of the system's hard drive.
- 4 Apply the master image to the other systems.
- 5 Run the product.

---

**NOTE** A license server must be running, and each system must be connected to the network in order to run the application.

---

### **Use a Master Image to Distribute Multi-Seat Stand-Alone Products to Multiple Systems**

A master image can be used to distribute multi-seat stand-alone products to multiple systems in your classroom or lab environment.

---

**NOTE** When using Norton Ghost, you must use the *-ib* switch to include the boot sector in your master image. Consult your imaging software for more details on including the boot sector as part of the master image.

---

- 1 Following the quickstarts for your multi-seat stand-alone products, create a stand-alone deployment for installing multi-seat stand-alone products.

- 2 Using the deployment shortcut that was created for the product, install the Autodesk product on the system to be imaged.

---

**NOTE** If you anticipate the need to re-image computers, do not run or activate any products on the primary system until the master image has been created, distributed, and tested on at least one other system.

---

If you want to test an application, you can create a temporary master image. For example, create a test image after the multi-seat stand-alone application has been installed, but *not* run. After the test image is created, run the application. If the test is successful, restore the image so the system is returned to a state before the application was run.

- 3 After the Autodesk product has been installed, use imaging software to create a master image of the system's hard drive, including the boot sector.
- 4 Apply the master image to your first satellite system so you can test the master image.
- 5 Launch the products on the test system and activate them.  
Initially, each product has a 30-day grace period. During that grace period, you must activate the products you want to continue using. Products on satellite systems are automatically activated as long as they are connected to the Internet. Satellite systems that are not connected to the Internet must be manually activated.
- 6 If the products on the test system operate correctly, distribute the master image to all the other satellite systems so you can run and activate the programs throughout the facility.

### **Restore Products Using the Master Image**

Should you ever have to reinstall one or more of your products, it may prove expedient to restore them using the master image.

---

**NOTE** Before attempting this, make sure you have saved a copy of each system's Software Licenses folder to another system.

---

- 1 Exit the application. Do not run the application again until you have completed this procedure.
- 2 Open Windows Explorer and copy the Software Licenses folder from the appropriate path shown below to a location other than the drive that will be restored.

*c:\Documents and Settings\All Users\Application Data\Autodesk\Software Licenses*

- 3** Restore the master image.
- 4** Restore the Software Licenses folder (and Product Licenses folder, if appropriate) that you created in step 2 to its original location on that system.

Because the licensing folders were copied to a location other than the drive being restored, they were protected during the restoration process. Once the licensing folders are copied back the system they came from, the products can be run and no reactivation is necessary.



# Product Activation and Removal

# 8

Activation is software-based license management technology that allows customers who have purchased legitimate software licenses to run the Autodesk software. The technology is designed to deter casual copying and unauthorized use of Autodesk products.

## In this chapter

- Overview of Activation
- Product Activation
- Product Removal

## Overview of Activation

Activation is software-based license management technology that allows customers who have purchased legitimate software licenses to run the Autodesk software. The technology is designed to deter casual copying and unauthorized use of Autodesk products.

Activation verifies the validity of the serial number and the eligibility of the computers for which the software has been installed. You will find that product activation is a secure, process that does not change the way the software works for licensed users.

## Product Activation

All Design Academy products are pre-configured as multi-seat stand-alone products. If you want to deploy your software on a network, you must call Autodesk Customer Service Center at 800-551-1490 to request that the Design Academy serial number be changed from multi-seat stand-alone to network. When ready, the Autodesk Customer Service Center can then provide you with your network activation code.

Since all educational products have pre-registered serial numbers, if you install products from a deployment they will be automatically activated when they first launch. If you install from the product media and you launch the product for the first time, you will be asked to activate, then enter your serial number. If everything is ok, your activation will be successful.

For multi-seat stand-alone products on a workstation, if you attempt to activate a product and you receive the activation dialog box with the message, “Do you want to launch the product or activate?” exit the product, and then restart it. Your product should already be activated. If you receive this message after relaunching and you have not activated the product before, you can manually activate the product. If the product fails to activate, this could indicate that the registration information does not match the registration information Autodesk has on record. If the product is not activated, follow the activation process again.

If you get locked out of online activation, you must call Autodesk Customer Service Center (800-551-1490) for your code.

If you have problems with the automated process or if you are activating products manually, you can use one of the following methods:

- By visiting <http://register.autodesk.com>

- By email: *authcodes@autodesk.com*
- By phone: 800-551-1490
- By fax: 800-225-6490

## **Product Removal**

If you need to uninstall any of the Design Academy products, you should do so from the Add/Remove Programs utility in the Control Panel.



# Education Curriculum

# 9

Your Design Academy package includes pre-architecture, pre-civil and pre-mechanical curriculum created specifically for the secondary school classroom. The curriculum includes a ready-to-use course syllabus, student exercises and projects, Autodesk software quick start tutorials and more. The Design Academy Curriculum provides up to one year of instruction material that can be customized to meet the needs of your classroom. Install the curriculum today and help your students master the fundamentals of pre-architecture, pre-civil and pre-mechanical design.

## In this chapter

- Curricula Overview and Installation

## Curricula Overview and Installation

The Design Academy curriculum begins with a Getting Started section that provides:

- Product installation overview
- Desktop navigation tools, including instructions for creating an AutoCAD icon
- File management techniques
- Quick Start guides for each product

Following the Getting Started section is the Instructor Resources section, with an outline of the project-based learning and the design process, an explanation of how to map your curriculum to state and national standards, syllabi for architectural design, civil design, mechanical design, and evaluation rubrics.

The Design Basics, Pre-Architecture, Pre-Civil, and Pre-Mechanical student projects sections are the core of the curriculum. They include units subdivided into lessons, exercises, projects, a summary, and self-test questions. The student projects also include corresponding standards for science, math, language arts, and technology content, as well as key terms and objectives. One unit is based on the FIRST Robotics Competition, FIRST Vex Challenge, and the F1 in Schools Challenge. Also included are cross-curricular projects in science and physics.

Finally, a resource section contains web-based reference points and a glossary that defines key terms.

New and experienced teachers are invited to use the curriculum in the way that best meets their classroom needs. A new teacher may benefit from following the curriculum step by step from start to finish; a seasoned design instructor may find it more suitable to customize the curriculum by selecting specific sections, and by complementing Design Academy with their own material.

The curriculum is also available as printable PDF files, included on the curriculum media. To print the PDF files, you must install Adobe® Reader® software, available on the media or by free download from [www.adobe.com](http://www.adobe.com).

To view the curriculum, you need to have both Microsoft Internet Explorer 5 or later and Windows Media® Player installed.

## Design Academy Curriculum Installation

The curriculum is provided in compiled HTML (CHM) format.

### To install Design Academy curriculum files

- 1 Insert the Design Academy Curriculum media Disc 1 into the media drive.
- 2 On your computer, create a new folder (for example: *\Design Academy 2008*).
- 3 Copy the *ADA2008\Content* folder from the Design Academy Curriculum media Disc 1 and paste it into the folder you created in step 2.
- 4 Copy the *ADA.ico* file from the Design Academy Curriculum media Disc 1 and paste it into the folder you created in step 2.

The curriculum CHM files should not be run from the network server. Download the necessary files to each node on the network, or copy the files to a shared network drive and assign read access to the files. Students should copy the files to their local computer before working with them.

- 5 To complete the installation, copy the *\Data Files* folder from the Design Academy Curriculum media Disc 2 to your local Design Academy folder.

---

**TIP** For faster setup, copy only the datasets required for the immediate session.

---

### Design Academy Curriculum Data Files

The data files for exercises are located in the *\Data Files* folder of the Design Academy Curriculum media. The files have the same structure as the table of contents.

To use the data files, copy them from the Curriculum media to each computer. If the computers are on a network, copy the data files to a shared network drive and assign read access to the files. Students should copy the files to their local computer before working with them.

---

**NOTE** When the data files are copied from the media, they will be read-only. Turn off the read-only attribute on the data files so the files can be modified in the lessons.

---

### To turn off the read-only attribute

- 1 In Windows Explorer, locate and select the file or folder whose properties you want to change.
- 2 Click File menu > Properties.
- 3 In the Properties dialog box, on the General tab, clear the Read Only check box.

---

**NOTE** When changing the attributes of a folder, you will be asked if you want to apply the change to any subfolders and files that reside in the selected folder. Click OK.

---

- 4 Click OK.

### To create a Design Academy Curriculum shortcut on your desktop

- 1 Right-click anywhere on your desktop and choose New > Shortcut from the right-click menu.
- 2 In the Create Shortcut dialog box, click Browse and navigate to the folder where you installed the Design Academy Curriculum (for example: *\Design Academy 2008*).
- 3 Open the *\ADA2008\Content* folder, select *ADA\_Main.chm*. Click OK.
- 4 On the Create Shortcut dialog box, click Next.
- 5 In the Select A Title For The Program dialog box, enter Design Academy. Click Finish.
- 6 On the desktop, right-click the new shortcut icon, and click Properties.
- 7 On the Shortcut tab, click the Change Icon button.
- 8 Click Browse and navigate to the folder where you installed the Design Academy Curriculum.
- 9 Choose *ADA.ico*, and then click Open. Click OK to close the Change Icon dialog box.
- 10 Click OK to close the Design Academy Properties dialog box.
- 11 Double-click the shortcut icon to access the Design Academy curriculum.

## **Design Academy Curriculum Documentation**

If you need hard copies of the lessons, print content directly from the Design Academy Curriculum media or PDF files.

### **Printing from the Curriculum**

To print from the curriculum, open the page you want to print, and then click Print.

### **Printing a PDF File**

PDF files for exercises are located in the Printable Lessons folder of the Design Academy Curriculum media. The files are organized in folders with the same structure as the table of contents. Use this method for printing a large number of pages. Design Academy users may make a reasonable number of copies of the Design Academy curriculum for classroom instruction. Refer to the Design Academy License Agreement for more guidelines. Use the Adobe Reader software to open, view, and print the PDF files.



# Troubleshooting Guide

This chapter contains a collection of solutions for common problems that you may encounter when managing the software in a classroom or lab environment.

# 10

## In this chapter

- Network Licensing Issues
- Deployment Issues
- Activation Issues
- Refresh Issues

## Network Licensing Issues

This section outlines common issues and their solutions that may arise while working with network licensing.

**Why is it a bad idea to use Microsoft Word to edit my .lic file?** When you save a .lic file after editing it with a word processor, like Microsoft Word, extra data gets saved with the file. This results in an invalid .lic file. You should always use an ASCII text editor like Notepad to ensure that no extraneous data is saved with the file.

**How can I get my network license manager to administer licenses for my 2007-based products as well as my 2008-based products?** You can do this by first updating your network license manager most recent version. See the Install the Network License Manager section (page 23).

Then, follow the instructions for combining license files in the Licensing Multiple Products section (page 35).

## Deployment Issues

This section outlines common issues and their solutions that may arise while creating or using deployments throughout your facility.

**I deploy products in my facility by means of imaging software. However, I've had to run software on my system where I create the master image. How do I clean the system in preparation for creating a new master image?** A procedure for cleaning your main system can be found in the Clean a Primary System and Restore the Operating System section (page 11).

---

**TIP** If the deployment process seems to be taking an excessive amount of time, you can perform a quick test. Copy the media directly to the server. If the amount of time is approximately the same as the deployment method then nothing is wrong with your server or the deployment. Deployments do require ample time due to the amount of software being loaded.

---

## Activation Issues

This section outlines common issues and their solutions that may arise while activating products that you've installed at your facility.

**Before I create my master image shouldn't I activate and run the applications?** You should not run and activate stand-alone products if you anticipate re-imaging computers often, for example, once a month.

## Refresh Issues

This section outlines common issues and their solutions that may arise when it is necessary to refresh the software at your facility.

**I sometimes have to re-image our facility. Do I need to be concerned about breaking my software licenses?** When you create your master image, you need to make sure you have a clean boot sector. If you're using Norton Ghost, this is done with the *-IB* switch.

If your going to re-image frequently, you need to be sure to backup your authorization data. You need to copy the license files to a different system and then copy them back after you restore the master image. This ensures that the application will run without re-activation. Refer to the Restore Products Using the Master Image section (page 60).



# Contacts and Contents

This chapter contains contact information and an inventory of what you should have received with your package.

## In this chapter

- Contact Information
- Product Contents

# Contact Information

The information in this section is intended for the individual who administers the Autodesk Design Academy program at your institution.

## **Autodesk Contacts**

The following table contains key contact information for Autodesk, the Autodesk Education team, Autodesk Customer Service, and the Design Academy program.

Contact	Description
<b><u>Autodesk, Inc.</u></b>	
Shipping Address	Autodesk, Inc. 45169 Industrial Drive Fremont, CA. 94538
Website	<a href="http://www.autodesk.com">www.autodesk.com</a>
Technical Support website	<a href="http://www.autodesk.com/support">www.autodesk.com/support</a> View a list of support resources; find valuable technical solutions.
<b><u>Autodesk Education Team</u></b>	
Mailing Address	Autodesk, Inc. Attn: Autodesk Education Team 111 McInnis Parkway San Rafael, CA. 94903
Website	<a href="http://www.autodesk.com/education">www.autodesk.com/education</a>
<b><u>Autodesk Customer Service</u></b>	
Design Academy activation codes	Activate your products online through the Register Today pages of the Installation Wizard, if you have access to that wizard.

Contact	Description
	<p>If you have problems with this online process, you can use the following contacts to activate products manually.</p> <ul style="list-style-type: none"> <li>■ Online: <a href="https://register.autodesk.com">https://register.autodesk.com</a></li> <li>■ By email: <a href="mailto:authcodes@autodesk.com">authcodes@autodesk.com</a></li> <li>■ By phone: 800-551-1490</li> <li>■ By fax: 800-225-6490</li> </ul>
Autodesk Business Center (ABC)	<p>800-538-6401 or <a href="mailto:edu.abc@autodesk.com">edu.abc@autodesk.com</a></p> <p>Update your institution contact information with Autodesk, check shipping information, and verify your ADA serial number and renewal date.</p>
<b>Autodesk Design Academy</b>	
Design Academy administrator website	<p>Visit <a href="http://www.autodesk.com/school">www.autodesk.com/school</a> to find out about program resources and subscription management.</p>
Design Academy Manager email address	<p><a href="mailto:designacademy.manager@autodesk.com">designacademy.manager@autodesk.com</a></p> <p>Give feedback about Design Academy and obtain general program information.</p>
Technical Support	<p>800-225-1148 (9:00 a.m. to 8:00 p.m. Eastern time)</p> <p>Receive technical support for product installation and licensing.</p>
<b>Latin America</b>	
Activation	<p>Online: <a href="https://register.autodesk.com">https://register.autodesk.com</a></p> <p>By email: <a href="mailto:authcodes@autodesk.com">authcodes@autodesk.com</a></p> <p>By phone: 800-551-1490 or 415-507-4690</p> <p>By fax: 800-225-6490 or 415-507-4933</p>

Contact	Description
Technical Support	415-507-4810 (9 a.m. to 8:00 p.m. EST)
Autodesk Business Centers	USA phone: 415-507-4690 (Toll) Brazil phone: 0800-891-2663 Chile phone: 1230-020-2001 Colombia phone: 980-912-1311 Jamaica phone: 0800-551-1490 Mexico phone: 95-800-551-1490 USA fax: 415-507-4933 (Toll) Email: <a href="mailto:la.abc@autodesk.com">la.abc@autodesk.com</a>

## Product Contents

Your Autodesk Design Academy package contains the following:

- Design Academy Program Binder
- Design Academy Welcome Letter
- Design Academy License Agreement
- Design Academy Curriculum Brochure
- Design Academy Curriculum Media
- *Design Academy Installation Guide* (this document)
- Autodesk Student Community Brochure
- Autodesk Anti-Piracy Brochure
- Project Lead the Way Brochure
- Project Lead the Way DVD
- First Robotics Brochures (2)

The following Autodesk product media are included with your Design Academy package. If you are missing any items, contact your Academic Value Added Reseller.

<b>Design Academy 2008 Software</b>	<b>Number of Disks</b>
AutoCAD® 2008	2 (CD)
Autodesk® VIZ 2008	1 (DVD)
AutoCAD Architecture 2008	1 (DVD)
Revit® Architecture 2008	1 (DVD)
AutoCAD MEP 2008	1 (DVD)
Autodesk Inventor® Professional 2008 (includes AutoCAD Mechanical 2008, Autodesk Vault 2008, Autodesk Inventor 2008, and Autodesk Design Review 2008)	11 (CD)
AutoCAD Civil 3D® 2008 (includes AutoCAD Land Desktop Companion 2008)	2 (DVD)

### **Autodesk Media and Entertainment Software Options**

Purchased separately, the Autodesk Animation Academy program is sold through Autodesk Media and Entertainment Education Academic Value Added Resellers or directly from Autodesk. To find an Autodesk Media and Entertainment Academic Value Added Reseller in your area, call 1-800-879-4233 or visit the reseller locator at [www.autodesk.com/reseller](http://www.autodesk.com/reseller).

### **Documentation for Autodesk Products in Design Academy**

If necessary, you can print PDF versions of the installation and licensing manuals from the product's installation screen or from the product media. You need Adobe Acrobat Reader to view the PDF files. To download the Adobe Acrobat Reader free of charge, visit [www.adobe.com](http://www.adobe.com).

In addition to the installation and licensing guides, you can access extensive documentation within each Autodesk product by clicking the Help menu in the product.

For late-breaking information about each product (including installation information), see the product's Readme file (on the product media), or check the individual product sites at [www.autodesk.com/products](http://www.autodesk.com/products). The main Autodesk support page is [www.autodesk.com/support](http://www.autodesk.com/support).